



M5 CONNECT / M5 CONNECT DHC Electric Trolley Instruction Manual

EN

REGISTERONLINE
www.motocaddy.com/warranty



Distance Measurement Device (DMD) features are legal to use when local USGA and R&A rule 4.3 is in effect. Always check local and competition rules prior to commencing play



Visit www.motocaddy.com/instructions for other Motocaddy instructions including translations

Serial Number / Information about DHC	3	Introduction to Smart Features	18
Safe Use / Trolley Care	4	Disabling Smart Features / Bluetooth Range	19
Trolley Care / Battery Care & Advice.....	5	Installing the Motocaddy App	20
Charging Instructions / Lithium Battery Care	6	Bluetooth Pairing	21
Lithium Battery Care	7	GPS Mode	22
Attaching the Wheels / Inverting the Wheels.....	8	Hole Advancement / Units of Measure.....	23
Front Wheel Alignment.....	9	Smartphone Notifications	24
Unfolding your Trolley	10	Smartphone Notifications	25
Folding your Trolley	11	Smart Display Modes / Clock	26
Upper & Lower Bag Supports.....	12	Round Timer / Distance Measurement / Twilight Mode	27
Adjusting the Bag Supports.....	13	OTA Updates / Language Settings / Closing the App	28
Equipment Overview	14	Introduction to DHC / Parking Brake	29
Handle Overview / Starting, Stopping & Changing Speed	15	FCC Statement.....	30
Battery Meter / USB Charging.....	16	Declaration of Conformity.....	31
Adjustable Distance Control.....	17		

Locating your Serial Number

The serial number for this M-Series trolley is located on the trolley underside next to the motor (fig. 1). This number is required when registering your warranty online and should be kept handy for future use.

The same number should also be on the box received with your trolley. Please ensure you keep hold of the packaging in case you need to return your trolley for any reason. A proof of purchase must also be kept in case your trolley requires servicing during its warranty period.



Fig 1

Please keep a record of your trolley serial number here for future reference:

M

C

M

Information about DHC (Downhill Control) models

The information in this instruction manual applies to both standard and DHC electric trolley models. For DHC specific functionality, please turn to page 29.

Safety cut-out

This Motocaddy trolley is fitted with a timed safety cut-out feature. Once started the trolley will automatically cut power to the motor after ten minutes to prevent any possible damage to the trolley. Pressing the 'On/Off' button will restart the trolley.

Safe use of your Trolley

Motocaddy trolleys are designed for the transportation of golf bags and clubs contained within. Using the trolley for any other purpose may cause damage to the trolley and cause harm to the user.

- Do not attempt to transport any other equipment
- The trolley is not designed for the transportation of people
- Do not use the trolley to assist you when going up hills
- Submerging the trolley in water (e.g. a lake) is likely to cause damage to the trolley
- Do not operate the trolley whilst under the influence of drugs or excessive amounts of alcohol
- **All batteries must be disconnected from the trolley before folding, storage and transportation**

Caring for your Trolley

Although your Motocaddy trolley has been weatherproofed, please follow these simple guidelines to help protect your trolley:

- Do not store your trolley outside
- Try to minimise exposure to rain as much as possible with an umbrella during heavy rainfall
- Wipe excess water from the trolley prior to storage
- Never use a pressure washer to clean your trolley. To prevent water damage, wipe down with a damp cloth
- Avoid using high pressure air hoses near moving components

This Motocaddy trolley is designed to require very little maintenance. We do however recommend giving your trolley regular checks to ensure:

- There is no build up of excess mud and dirt
- The front wheel nut is on tightly and quick release lever is clamped down
- The front wheel is not clogged up and turns freely

Only original Motocaddy parts should be used when repairing your trolley.

Battery Care & Advice

All batteries must be charged as soon as possible after each use. Leaving batteries discharged for long periods of time will affect the battery life.

Please ensure that only batteries supplied by Motocaddy are charged with Motocaddy chargers. Cyclic battery chargers are designed specifically in accordance with the battery manufacturer's requirements. The Lithium battery charger MUST NOT be used to charge any other battery and is designed for use with Motocaddy Lithium batteries only.

The charger should only be connected to an earthed socket outlet; the battery charger should only be opened and maintained by authorised personnel. Unauthorised opening will invalidate your warranty.

The battery must be stored and charged on a dry non-carpeted surface and charged at temperatures ranging between 10°C and 30°C. Charging above or below these temperatures is not recommended as it can reduce the battery capacity.

When connecting your battery to the trolley, please ensure that the connections match up black to black and grey to grey.

Charging your Lithium Battery

1. Unplug the Lithium battery from the trolley. This should always be performed before folding the trolley to avoid damage to the battery and/or trolley
2. Plug the charger into your mains supply
3. Attach the battery cable to the charger matching black to black and grey to grey
4. When the charging LED indicator has turned green, the battery is fully charged and ready to be used

 RED - Battery charging   GREEN - Battery fully charged and ready to be disconnected

5. The charging process will take between 3 to 5 hours depending on the depth of discharge (Please be aware that this may take longer for the first few charges)
6. Once charging is complete please disconnect the charger from the mains power supply
7. Finally disconnect the charger from the battery

If you connect the battery to the charger and the LED goes out, this is likely to indicate that the battery is fully charged. Please double check the battery on the trolley to ensure that it is fully working.

Caring for your Lithium Battery

- Try to avoid getting the battery too wet (i.e. do not submerge the battery, avoid deep puddles and do not clean your trolley whilst the battery is still in the battery tray)
- Dropping the battery may cause damage to the internal cells
- Do not lift or carry the battery by the cable
- Use a damp cloth to clean off any dirt

Recommendations for hibernation of Lithium Batteries during winter months

If for any reason your Lithium battery is not going to be used for lengthy periods, e.g. 3 months over the winter, it is advised to store the battery half charged. To do this simply use the battery for a round of golf as usual and charge it for 1.5 hours at the end of the round. Before the battery is used again, recharge it (top it up) prior to use.

We recognise that extended absences are not always planned in advance, however when it is likely that you will not be using your battery for a period of time it is good practice to follow these steps to extend the life of your Lithium battery. Please ensure that the charger is ALWAYS disconnected from the battery after charging.

Battery Management System (BMS)

Motocaddy Lithium batteries are fitted with a comprehensive battery management system (BMS) to protect the battery from excessive abuse, high currents, deep discharge and overcharge. When the battery is delivered there may be no output as the BMS is designed to maximize safety whilst shipping. Please ensure that the battery is fully charged prior to connecting it to your trolley as this will activate the BMS and effectively ‘switch-on’ the battery. From time to time, at deep discharge or long term storage the BMS may switch-off the battery. A full battery charge will rectify this problem.

Motocaddy golf trolleys are designed to work with the BMS system installed in the Lithium batteries and the voltage meter is also synchronised to work in conjunction with the battery. If for any reason the voltage on the battery falls below the low battery warning on the trolley, then the BMS may disable the battery to protect it. Again if this occurs please recharge fully. Please be aware that Lithium batteries tend to ‘drop off’ quickly at the end of the cycle so it is not advisable to attempt to play excessive holes as the BMS will activate for protection purposes.

Attaching the Wheels

There is a left and a right wheel and it is important that you attach them on the correct side, otherwise the trolley will not move. There is an "L" and "R" on the inside of the wheel on the central hub. Left and Right sides are determined when stood behind the trolley at the handle.

DHC trolley models do not have a specific left and right wheel.

To attach the wheels follow these simple steps:

1. Push the quick release button in towards the centre of the wheel
2. Slide the wheel onto the trolley axle as far as it will go (onto the inner groove)
3. Once in position, release the button and pull the wheel outwards slightly to lock
4. An audible 'click' will confirm the wheel is in the correct position

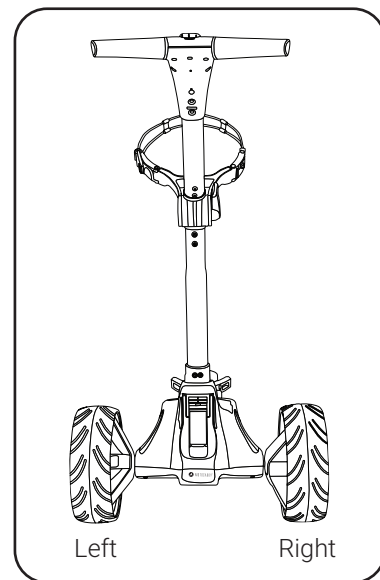
The outer groove can be used as a "free wheel" option if you run out of battery power.

To check you have attached the wheels correctly onto the inner groove, you will find they only rotate freely in one direction (not applicable to DHC models).

Inverting the Wheels

The wheels can be inverted to reduce the trolley width for transportation and storage.

1. Push and hold the quick release button while sliding the wheel off the axle
2. Flip the wheel over, push and hold the button, then slide onto the axle
3. Release the button and pull the wheel out slightly until it engages with the free wheel groove



Adjusting the Front Wheel Alignment

In the unlikely event that your trolley is not tracking in a straight line, the alignment of the front wheel can be adjusted to rectify the fault. This problem can be caused by a number of factors including a slightly loose bag support or an unevenly packed golf bag.

To alter the alignment of the front wheel, follow these simple steps:

1. Lift the quick release lever positioned on the front wheel housing and loosen the wheel nut (fig. 1)
2. There are two small metal dials on either side of the housing that are used to realign the wheel (fig. 2)
3. If your trolley is veering to the right, you will need to turn the left hand dial clockwise and the right hand dial anti-clockwise
4. If your trolley is veering to the left, you will need to turn the right hand dial clockwise and the left hand dial anti-clockwise
5. Tighten the wheel nut and push down the lever to lock the wheel back into place (fig. 3)

This procedure can be carried out until you are happy the trolley is moving in a straight line (please note you may only need to adjust one dial at a time).

These instructions are based on positioning yourself in front of the trolley looking at the wheel.

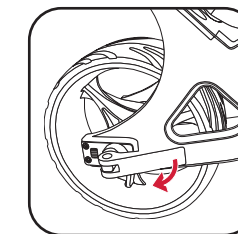


Fig 1

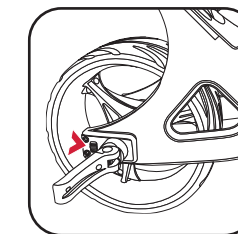


Fig 2

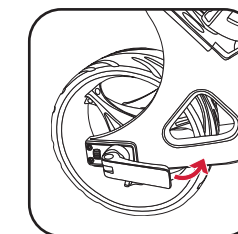


Fig 3

Unfolding your Trolley

We recommend unfolding your trolley once the wheels have been un-inverted and reattached (see page 8).

1. Lift the upper bag support slightly and release the upper latch (fig. 1)
2. Unfold the handle and re-secure the latch (fig. 2)
3. Release the lower latch (fig. 3)
4. Lift the trolley handle up into position (fig. 4). The front wheel will automatically unfold
5. Re-secure the lower latch and ensure the auto-open stand is folded away (fig. 5)

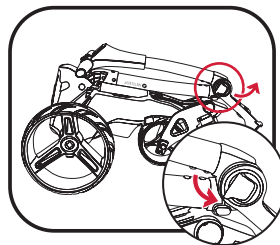


Fig 1

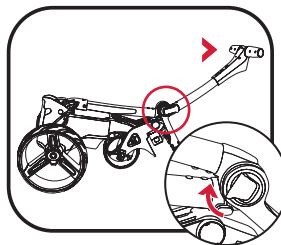


Fig 2

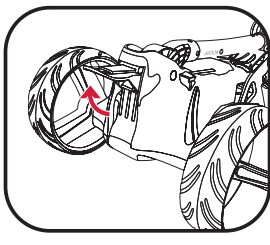


Fig 3

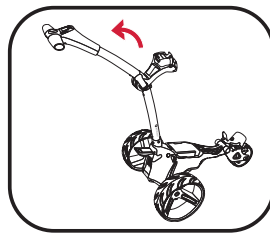


Fig 4

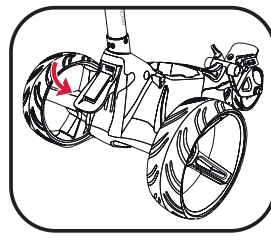


Fig 5

Folding your Trolley

1. Release the lower latch (fig. 1). The auto-open stand will also be activated
2. Fold the frame forward until fully extended (fig. 2). The front wheel will automatically fold underneath
3. Release the upper latch and fold the handle back until the trolley is fully folded (fig. 3)
4. Re-secure both latches. If you wish to stand the trolley upright, leave auto-open stand out. Remember to ensure the auto-open stand is pushed down if not being used (fig. 4)
5. The wheels can be inverted to reduce the trolley width for transportation and storage (fig. 5). See page 8 for details

Please ensure the auto-open stand is folded away when not in use to prevent damage.

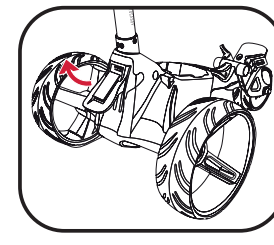


Fig 1

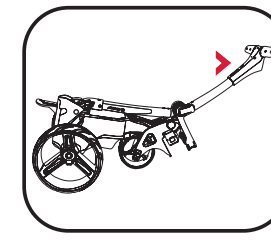


Fig 2

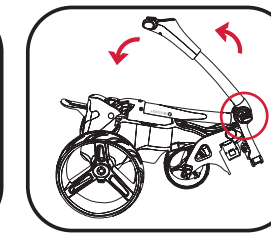


Fig 3

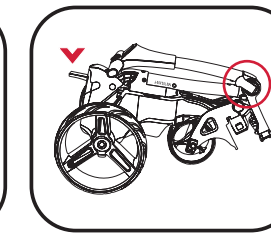


Fig 4

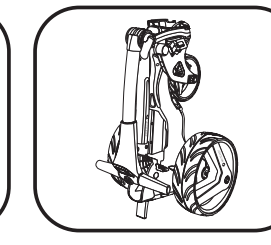


Fig 5

Upper Bag Supports

The upper bag support straps are secured using the following steps:

1. Stretch the elasticated strap around the bag & loop the rounded bar underneath the hook (fig. 1)
2. Position the two placement straps centrally on your golf bag (fig. 2)

Lower Bag Supports

This Motocaddy trolley is fitted with the EASILOCK™ bag attachment system. If you are using an EASILOCK™ compatible golf bag please follow these simple instructions:

1. Remove the two pre-fitted lower bag straps by depressing the rear button and sliding (fig. 3)
2. Match up the indicating line on the golf bag with the line on the lower bag support
3. Lower the bag until the pins lock in position. You should hear an audible 'click'

If you are using a non-EASILOCK™ golf bag, please use the following instructions:

1. Stretch the lower bag strap around the bag base & loop the rounded bar underneath the hook
2. Position the two placement straps centrally on the base of your golf bag

Please ensure all straps are hooked securely before releasing. Failure to do so could result in injury.

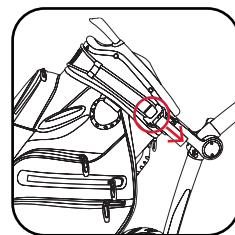


Fig 1

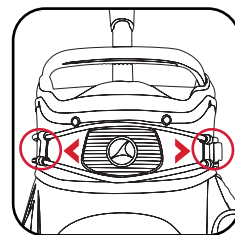


Fig 2

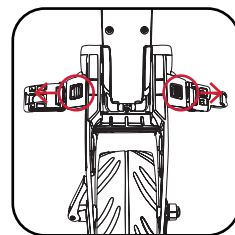


Fig 3

Adjusting the Bag Supports

The bag support straps are manufactured from elasticated material to allow your golf bag to be held tightly in position.

The strap should be adjusted to be reasonably tight around the golf bag:

1. Unclip the elasticated straps from the housing by pulling outwards in the direction shown (fig. 1)
2. Move the bar as required to tighten or loosen the strap fitting. Pulling the bar downwards will tighten, pushing it upwards will loosen (fig. 2)
3. Ensure that the straps are clipped back into the housing before use (fig. 3)

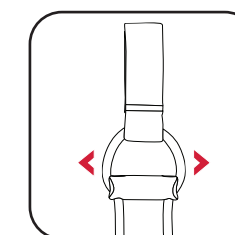


Fig 1

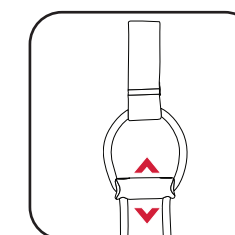


Fig 2

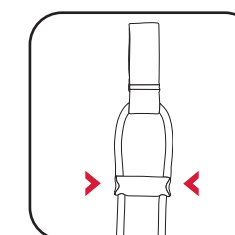
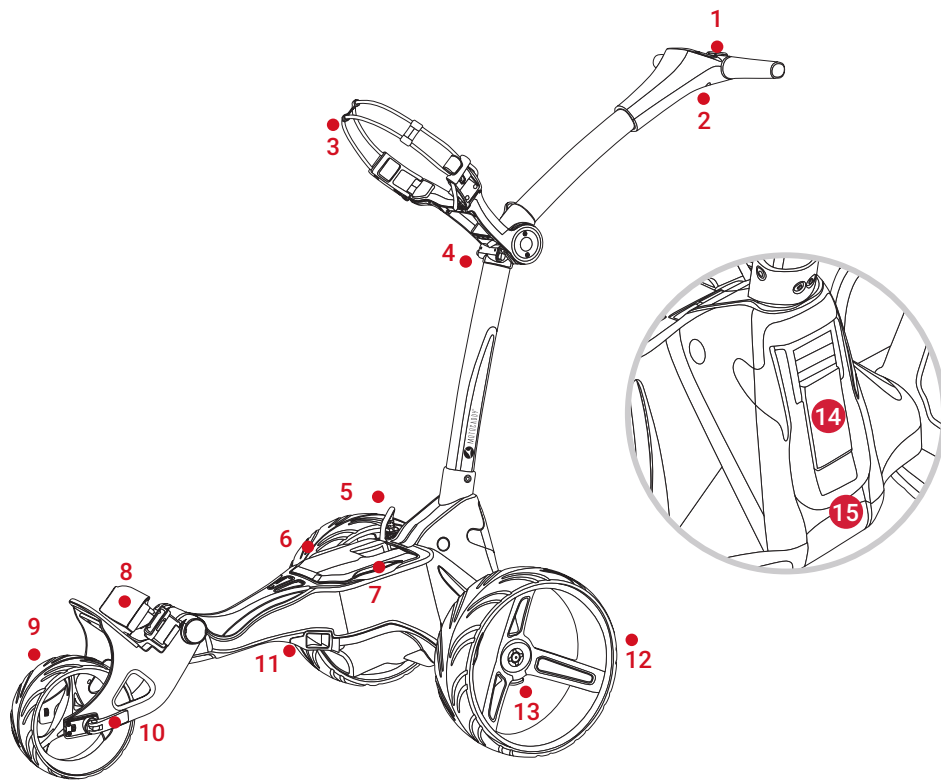


Fig 3

1. Smart Display
2. USB Charging Port
3. Upper Bag Support
4. Upper Release Latch
5. Battery Connector
6. Battery Tray
7. Battery
8. EASILOCK™ Lower Bag Support
9. Front Wheel
10. Front Wheel Alignment Adjusters
11. Motor (under Battery Tray)
12. Rear Wheels
13. Rear Wheel Release Button
14. Auto-Open Stand
15. Lower Release Latch



Handle Overview

1. Smart Display
2. Power Indicator LED
3. Speed Indicator
4. Battery Indicator LED
5. Speed Controller & Stop/Start button
6. USB Charging Port (under handle)

Starting, Stopping & Changing Speed

The M5 CONNECT is extremely simple to control. There is one main button that is used to start and stop the trolley, whilst also controlling the speed, which can be adjusted while the trolley is stationary or in motion.

The trolley has 9 speed settings (1 to 9) with 1 being the slowest and 9 the fastest. To increase the speed, rotate the speed dial clockwise, or anti-clockwise to decrease the speed.

To start the trolley, simply select your required speed setting and press the button. The trolley will smoothly accelerate until it reaches the selected speed. To stop the trolley, simply press the button again - there is no need to reduce the speed setting.



Power & Battery Level

There are two indicating LEDs beside the speed display. The right hand LED displays the battery capacity (green & red) and will illuminate as soon as the battery is plugged in. The left hand LED will illuminate when the power is on.

The trolley is designed to protect your battery from being fully discharged, should your battery capacity drop too low the trolley will cut the power to the motor. If this should happen you will see “b” flashing on the screen.

USB Charging

This trolley features a USB charging port designed to charge USB powered devices during your round.

Simply remove the covering cap and plug a USB cable into the charging port located on the underside of the handle. The device will continue charging while the cable is attached and the battery is connected.

The rate of charge will be slower than a mains AC charger and similar to plugging the device into a PC. The USB charger takes power from the main trolley battery and continuous charging will reduce the battery capacity between charges. The trolley is designed to disable the USB charging port when the battery capacity reaches a preset level.

Adjustable Distance Control

The M5 CONNECT features an easy to use Adjustable Distance Control which will allow you to send your trolley ahead of you from 15 - 45 metres.

- 1. While stationary select the speed that you wish your trolley to set off at
- 2. Hold down the on/off button for 2 seconds, you will see the outer digits of the LED display rotate once clockwise (fig. 1) and “1” will then flash on the display (fig. 2). There are three settings for the distance, 1 = 15 metres, 2 = 30 metres and 3 = 45 metres
- 3. Turn the button clockwise to increase and anti-clockwise to decrease to your preferred distance
- 4. Press the on/off button to set the trolley in motion. While the trolley is powered using ADC, the left hand indicating LED will flash
- 5. The trolley can be stopped manually by pressing the button again

In the unlikely event that your trolley fails to register distance while in ADC mode, the trolley will cut power to the motor to prevent the trolley from travelling too far. The trolley screen will flash “E” to indicate that this safety feature has been activated (fig. 3).

The trolley can be reset by pressing the on/off button once, thereby allowing you to continue to use the trolley with ADC disabled until you are able to contact our technical support team.



Fig 1



Fig 2



Fig 3

Introduction to Motocaddy CONNECT Smart Features

The Motocaddy CONNECT trolley range can be linked to the Motocaddy GPS app via a Bluetooth® connection on any compatible smartphone; allowing the trolley’s Smart Display to be used in place of a conventional GPS; including front, middle and back of green distances along with hole information, distance measurement, clock and round timer.

Offering the ultimate in on-course connectivity, the CONNECT enabled trolleys can also receive push alerts for text messages, email, missed calls and other compatible apps.

The following pages contain an overview of how to use the wide-range of integrated features. For more detailed instructions including FAQs and updates, visit www.motocaddy.com/support.

IMPORTANT : Distance Measurement Device (DMD) features are legal to use when local USGA and R&A rule 4.3 is in effect. Always check local and competition rules regarding the use of DMD and Push Notifications prior to commencing play.

Disabling Smart Features

Motocaddy CONNECT trolleys can be used without connecting to the Motocaddy app.

When the trolley battery is connected, the Smart Display will initialise and display the time, date and “SEARCHING OPEN APP” message (fig. 1). The Smart Display will continue to display this message until a Bluetooth connection has been made. The trolley can be used in this state with minimal effect on battery capacity.

It is possible to hide the ‘Search’ message (fig. 2) by pressing the centre button or turn off the Smart Display altogether by holding down the centre button for five seconds (fig. 3).

Bluetooth Range

The Motocaddy CONNECT Bluetooth connection has a range of up to 30 metres (depending on phone model). If the phone goes outside of this range the Smart Display will show “OUT OF RANGE”.

If the phone comes back in to range within 30 minutes, it will automatically re-connect. If it remains out of range for more than 30 minutes, the Smart Display will automatically power off.



Fig 1



Fig 2



Fig 3

Installing the Motocaddy Smartphone App

It is necessary to install the Motocaddy app to utilise the Motocaddy CONNECT Smart Features. The Motocaddy app utilises the GPS hardware on your smartphone to provide distance and hole information on the golf course.

The Motocaddy app is compatible with iPhone 4s or newer (running iOS 9.0 or later) & Samsung Galaxy S4 or newer (running Android 4.4 and higher). Please note, not all Bluetooth enabled mobile phone handsets are compatible with the Motocaddy CONNECT Smart Display and pairing for other devices cannot be guaranteed.

To install the 'Motocaddy GPS' app, search for "Motocaddy" on either the Apple App Store or on Google Play.

Apple Devices



Android Devices



Once installed, select the Motocaddy GPS app and it will load the registration screen. When using the app for the first time, you will be prompted to allow the app to access your location and it is important that this is enabled to use GPS features.

We recommend that you complete the app registration process to allow us to keep you informed about future updates to both the app and Motocaddy CONNECT smart functionality. Please note that completing the app registration does not register the trolley.

Bluetooth Pairing

It is necessary to pair the Smart Display with a compatible smartphone to utilise the Motocaddy CONNECT GPS and Notification features. Once your phone has been paired for the first time, it will automatically re-connect when the Smart Display is powered on, the phone is within range and the Motocaddy app is open. You will need to enable Bluetooth on your mobile device.

To pair your phone with your Motocaddy CONNECT trolley:

1. Plug the battery in to the trolley. The Smart Display will initialise and show "Searching open app" (fig. 1)
2. Open the Motocaddy app on your phone and select the PAIR DEVICE button (fig. 2)
3. Further instructions will be displayed. When ready, select PAIR DEVICE
4. Once the phone and trolley have found each other, the CONNECT Smart Display will show a unique 6 digit code (fig. 3) and the app will request for this number to be entered. Enter the 6 digit trolley code into the app
5. Once accepted, the Smart Display will show the user's phone name (fig. 4) and the app will confirm that you have successfully paired
6. You will now have a choice of MY DEVICE (to go to the device settings screen) or PLAY GOLF



Fig 1



Fig 2 - App Settings



Fig 3



Fig 4

Using GPS Mode

To use your Motocaddy CONNECT trolley in GPS mode, the Smart Display must be paired and connected to a compatible smartphone which has the Motocaddy GPS app installed.

To start a round in GPS mode, open the Motocaddy app on your phone and follow these steps:

1. The app should show a list of local courses (if no local courses are shown, please check that location services have been enabled). It is also possible to manually search for a course using the search courses button at the top of the page (location services must still be enabled to receive distances on the course)
2. Select the required course and then select your tee marker. Wait for the 1st hole to load within the app
3. Once loaded, the Motocaddy CONNECT Smart Display will update to show GPS information (fig. 1)



Fig 1

Automatic Hole Advancement

The Motocaddy app will automatically advance to the next hole when you move towards the next tee. The Motocaddy CONNECT Smart Display may show "Loading" while the app updates (fig. 1).

The app may not always automatically advance to the next hole. This can be caused by a number of factors including an altered tee position or incorrect changeover point.

It is possible to manually advance through the holes using either the app or the Smart Display.

To manually advance using the app, press the left (previous hole) and right (next hole) arrows at the side of the screen (fig. 2).

To manually advance directly from the trolley handle, press the left (previous hole) and right (next hole) buttons located beneath the Smart Display (fig. 3).

Please be aware that holes will advance sequentially from the 1st hole onwards. If you are commencing play at a different location, you will need to manually advance to the required hole.

Units of Measure

Distance readings within the Motocaddy app and Smart Display can be displayed in both yards and metres. This can be set within the app settings.



Fig 1



Fig 2



Fig 3

Smartphone Push Notifications

The Motocaddy CONNECT Smart Display can be set to provide alerts for a wide-range of push notifications including new email, text messages, missed calls and other compatible apps including WhatsApp and Facebook.



To use the Motocaddy CONNECT notifications feature, the Smart Display must be paired and connected to a compatible smartphone which has the Motocaddy GPS app installed. It is also possible to use the Motocaddy CONNECT GPS mode without enabling push notifications.

IMPORTANT : Always check local and competition rules prior to enabling push notifications.

Notification Settings

It is possible to preset which notification types are sent to the Motocaddy CONNECT Smart Display. Simply open the Motocaddy app and select the required notification types within the device 'Settings' menu. (fig. 1).

There are also other app specific notification settings within your phone that need to be enabled for the notifications to work. For a full list of compatible apps, plus individual app notification settings (including the 'Push Notifications' option), please visit www.motocaddy.com/support.

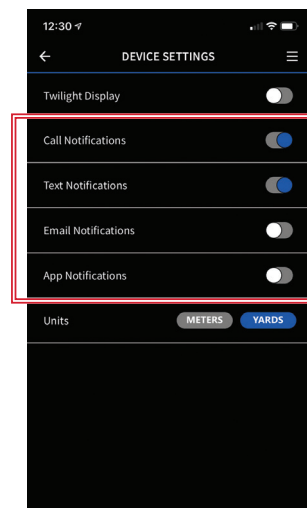


Fig 1 - App Settings

Notification Stacking & Grouping

Notifications will stack on the Motocaddy CONNECT Smart Display, with the most recent notification visible.

To clear a notification from the Smart Display, press the middle button (fig. 1). This will need to be repeated for each notification received.

Once all notifications have been cleared, the Smart Display will revert to the GPS screen (if "Play Golf" has been selected) or time and 'searching' message (if "Play Golf" has not been selected).

If you are using an iPhone with the Motocaddy CONNECT trolley, notifications will be grouped so the Smart Display shows the number of missed calls, emails or text messages that you have received from each contact (fig. 2). Grouping is not available for Android users and individual notifications will be shown for each alert.

Standalone Notifications

Once paired, the Motocaddy CONNECT Smart Display has been developed to allow Push Notifications to be received without the Motocaddy app being open. This allows the trolley to be used for Time, Date and Notification features without needing to have the app open.

To stop receiving Push Notifications, please disable Bluetooth on your mobile device, unpair your mobile device, update your mobile notification settings or switch off the Smart Display.



Fig 1

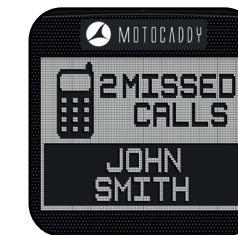


Fig 2

Smart Display Modes

The Motocaddy CONNECT Smart display can show three different function screens - GPS Mode, Clock/Round Timer and Distance Measurement.

Press the centre 'Change Mode' button to scroll through these different modes (fig.1).

Clock

The date and time shown on the Motocaddy CONNECT Smart Display (fig. 2) will be automatically set once you have paired your trolley with a phone for the first time. The date and time will be displayed based on your phone's date and time settings and can be shown in both 12 and 24 hour formats.

Once an initial pairing has been completed, the trolley will continue to record time based on the most recent pairing for up to 7 years without re-connection.

The date and time cannot be set manually through the Motocaddy CONNECT Smart Display.



Fig 1



Fig 2

Round Timer

The round timer starts counting up as soon as you select a course and start a new round. It can be paused and reset from within the app, you would need to tap on the round timer and this will open up the round timer controls (fig. 1a).

The round timer can also be paused and reset directly on the Smart display whilst on the time and pace screen using the left (pause) and right (reset) buttons (fig.1b).

Distance Measurement

The shot distance can be controlled from either the Motocaddy GPS app (fig. 2a) or directly using the Smart Display.

On the Measure Shot screen, use the left button to start and reset the shot distance measurement (fig. 2b).

Twilight Mode

Twilight mode can be enabled from the device settings page within the Motocaddy app and alters the Motocaddy CONNECT Smart Display to optimise for viewing in low light and bright sunlight.

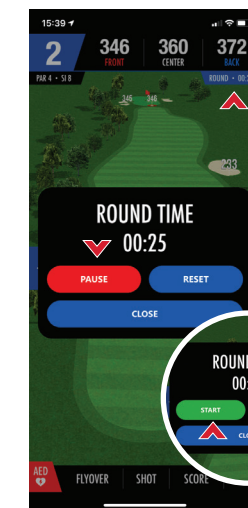


Fig 1a



Fig 2a



Fig 1b



Fig 2b

Over The Air (OTA) Updates

The Motocaddy app has been developed to offer 'Over The Air' (OTA) updates to the Motocaddy CONNECT Smart Display, allowing the trolley software to be seamlessly updated with exciting new features and upgrades as soon as they become available.

Further information and instructions regarding OTA updates is available at **www.motocaddy.com/support**.

Language Settings

The Motocaddy app is available in five languages (English, French, German, Spanish and Swedish) and is set automatically based on your phone's default language and region settings.

Closing the Motocaddy App

Once you have completed your round, you can close the app to stop location tracking and data usage.

APPLE iPHONE (X & HIGHER) : Swipe up and hold from bottom of the screen to see your most recently used apps. Swipe right or left to find the Motocaddy GPS app. Swipe up on the app preview to close it.

APPLE iPHONE (8 Plus to 4) : Double-press the 'Home' button to see your most recently used apps. Swipe right or left to find the Motocaddy GPS app. Swipe up on the app preview to close it.

ANDROID (4.4 & HIGHER) : Press the 'Recent Applications' button to see your most recently used apps. Swipe up or down to find the Motocaddy GPS app. Swipe left or right on the app preview to close it.

The below information is applicable to DHC models ONLY.

Introduction to DHC

The letters DHC stand for 'Downhill Control' and mean that your trolley will automatically maintain a controlled speed whilst travelling down hills.

Whenever you are looking to move the trolley, even if just to reposition it ready to use, always put it on a low speed setting to make it easier to steer.

Using the DHC Parking Brake

DHC models are fitted with an electronic parking brake. To use this feature, the trolley must be in a stationary position. The parking brake is initiated by rotating the speed dial down to 1 and then rotating one click further.

Once activated, the speed indicator will toggle between 'P' and number '1' (fig. 1).

The speed setting can be adjusted whilst the parking brake is activated by turning the speed dial.

To release the parking brake, press the 'On/Off' button to start the trolley.



Fig 1 - M5 CONNECT DHC

FCC Statement

1. This device complies with Part 15 of the FCC Rules.
- Operation is subject to the following two conditions:
- (1) This device may not cause harmful interference, and
- (2) This device must accept any interference received, including interference that may cause undesired operation.
2. Changes or modifications not expressly approved by the party responsible for compliance could void the user's authority to operate the equipment.

FCC Radiation Exposure Statement:

The device has been evaluated to meet general RF exposure requirement. The device can be used in portable exposure condition without RF striction.

NOTE: This equipment has been tested and found to comply with the limits for a Class B digital, pursuant to Part 15 or the FCC Rules.

These limits are designed to provide reasonable protection against harmful interference in a residential installation. This equipment generates, uses and can radiate radio frequency energy and, if not installed and used in accordance with the instructions, may cause harmful interference to radio communications, However, there is no guarantee that interference will not occur in a particular installation. If the equipment does cause harmful interference to radio or television reception, which can be determined by turning the equipment off and on, the user is encouraged to try to correct the interference by one or more of the following measures:

- (1) Reorient or relocate the receiving antenna
- (2) Increase the separation between the equipment and receiver
- (3) Connect the equipment into an outlet on a circuit different from that to which the receiver is connected
- (4) Consult the dealer or an experienced radio/ TV technician for help

CAUTION : RISK OF EXPLOSION IF THE SMART DISPLAY CELL BATTERY IS REPLACED BY AN INCORRECT TYPE. DISPOSE OF USED BATTERIES ACCORDING TO THE INSTRUCTIONS.



DECLARATION OF CONFORMITY

ORIGINAL

Business Name and Full Address of Manufacturer

Motocaddy Ltd - Units 15-18 Stansted Distribution Centre,
Start Hill
Great Hallingbury

Hertfordshire
CM22 7DG

Name and Address of Authorised Representative

-

Name and Address of the Person in Community Authorised to compile the Technical File
(If different to above)

-

Description of product (Commercial Name)

Motocaddy Electric Trolley

Function, Model, Type, Serial Number

Function: Electric Trolley
Type: Motocaddy Digital Range

Model: S1/S1 DHC/S3 PRO/S3 PRO DHC/
S5 CONNECT/S5 CONNECT DHC/S7 REMOTE/
M1/M1 DHC/M3 PRO/M3 PRO DHC/
M5 CONNECT/M5 CONNECT DHC/M5 GPS/
M5 GPS DHC/M-TECH/C-TECH/M7 REMOTE

Standards Used

BS EN ISO 12100 2010

Place of Declaration

Units 15-18 Stansted Distribution Centre,
Start Hill
Great Hallingbury

Hertfordshire
CM22 7DG

Date of Declaration

Wednesday January 01, 2020

Declaration

I declare that the machinery fulfils all the relevant provisions of the following Directives:- Low
Voltage Directive 2006/95/EC, Electromagnetic Compatibility Directive 2004/108/EC.

Person Empowered to Draw Up Declaration

Name: John Helas

Position: Managing Director

Signature:



Motocaddy Ltd, Units 15 - 18 Stansted Distribution Centre,
Start Hill, Great Hallingbury, Hertfordshire, CM22 7DG, United Kingdom

t: +44 (0)1279 712 370 e: info@motocaddy.com w: www.motocaddy.com



We are dedicated to protecting the environment and encourage the recycling of Motocaddy products through a free collection and disposal service. To find out more or to locate your nearest Motocaddy recycling point, please contact us through our website.

MC.20.63.001

EASILOCK™ Patent (GB) - GB2519073
USB Charging Port Patent (GB) - GB2473845
USB Charging Port Patent (AUSTRALIA) - 2010224448

Apple, the Apple logo, and iPhone are trademarks of Apple Inc., registered in the U.S. and other countries. App Store is a service mark of Apple Inc.

Android and Google Play are trademarks of Google Inc.

The Bluetooth® word mark and logos are registered trademarks owned by the Bluetooth SIG, Inc. and any use of such marks by Motocaddy is under license. Other trademarks and trade names are those of their respective owners.